

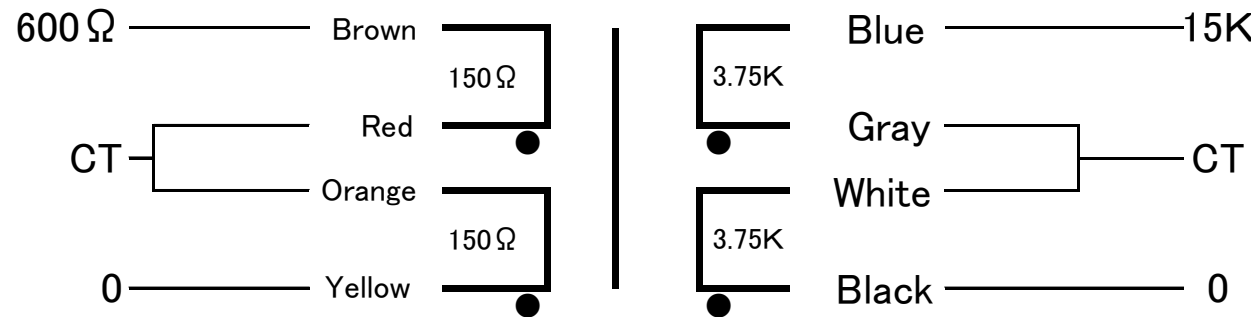


FM-600-15CT

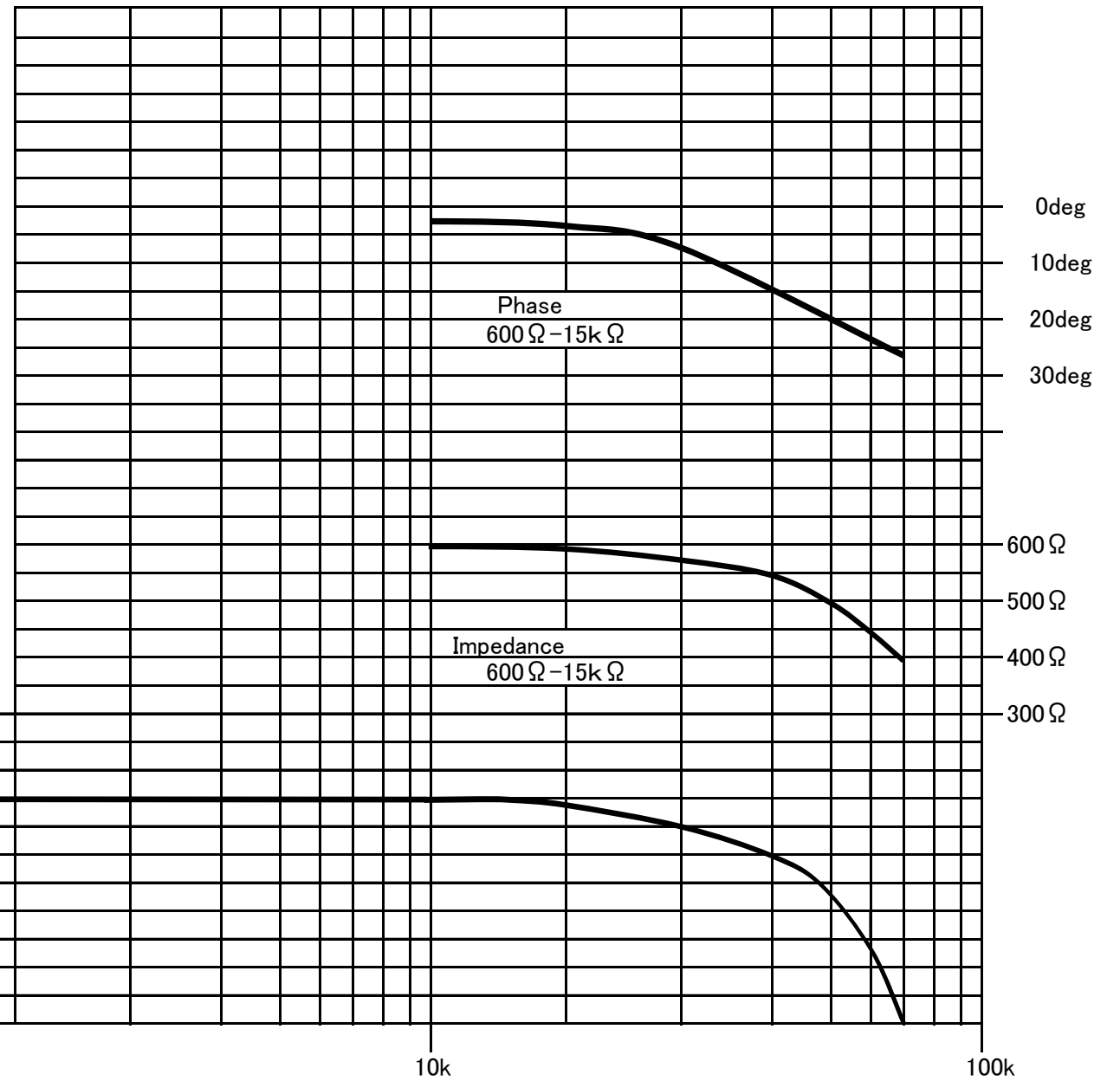
FINEMET® NANOCRYSTALLINE Core Input Transformer

Audio Feast

Wiring Connection



Ratio	1:5.0	Max input Voltage	10V(20Hz)
Freq. Response	20~40kHz(-1dB 0.775V 0dB)		
Pri. Inductance	15H(40Hz)	Sec. Load Resistance	15k~1.6MΩ
Pri. DCR	Brown-Red(8.8Ω)/Orange-Yellow(8.8Ω)	Sec. DCR	Blue-Gray(213Ω)/White-Black(213Ω)
Pri. max DC current	140mA	Sec. max current	30mA
Dimension	50x40x71(H) mm	Black hammered metal case, or Urushi finish	
Mounting Screw	38x28mm M3	Weight	470g



Email: CleanUnderwear@gmail.com

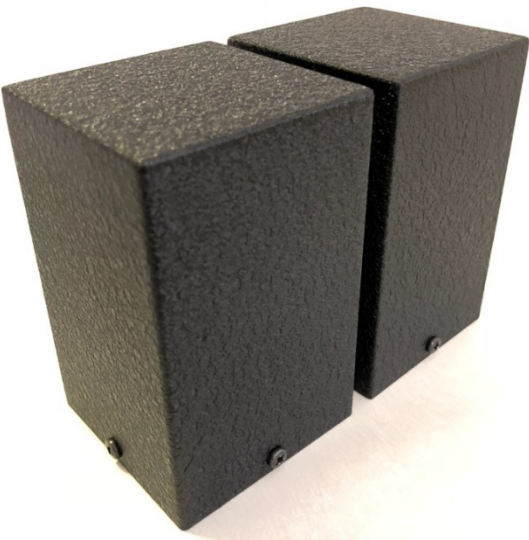
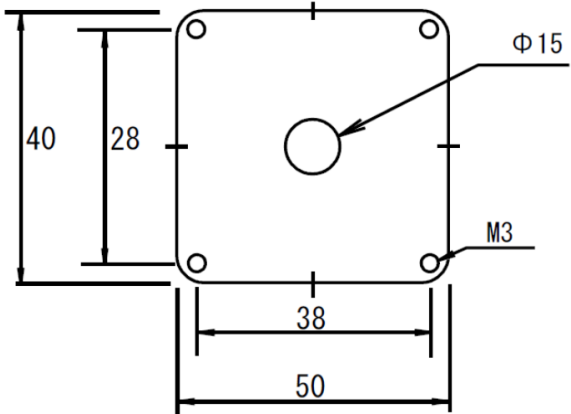
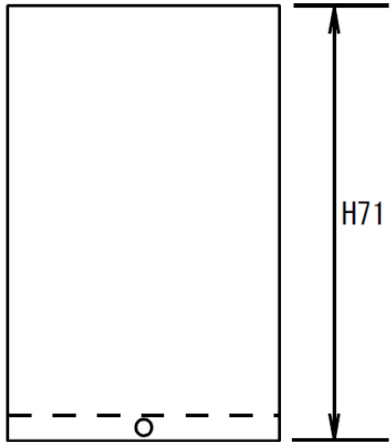
Web: TheAudioFeast.com

Distributed by Audio Feast (Nashville, TN, USA)

Final finish by Teramoto (Myoko, Japan)

Designed by General Ind. (Saitama, Japan)

Available on Black metal case OR
Urushi finish



Black Metal Case



Urushi finish

All dimension is in mm.

Dimension does not include screws around the case.

