

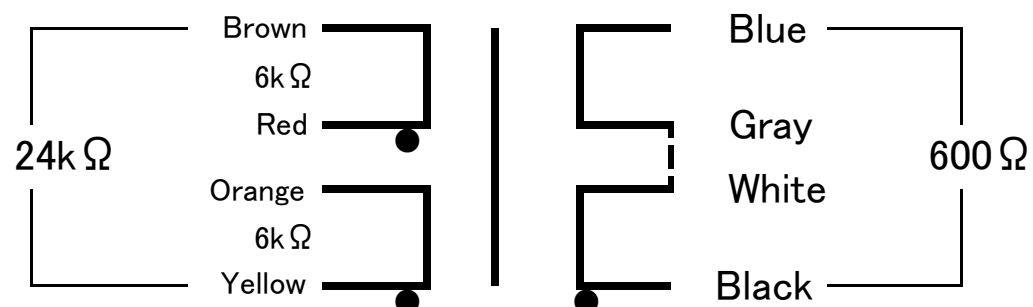


FM-24K-600CT  
FINEMET® NANOCRYSTALLINE Core Line/Input/Driver Transformer

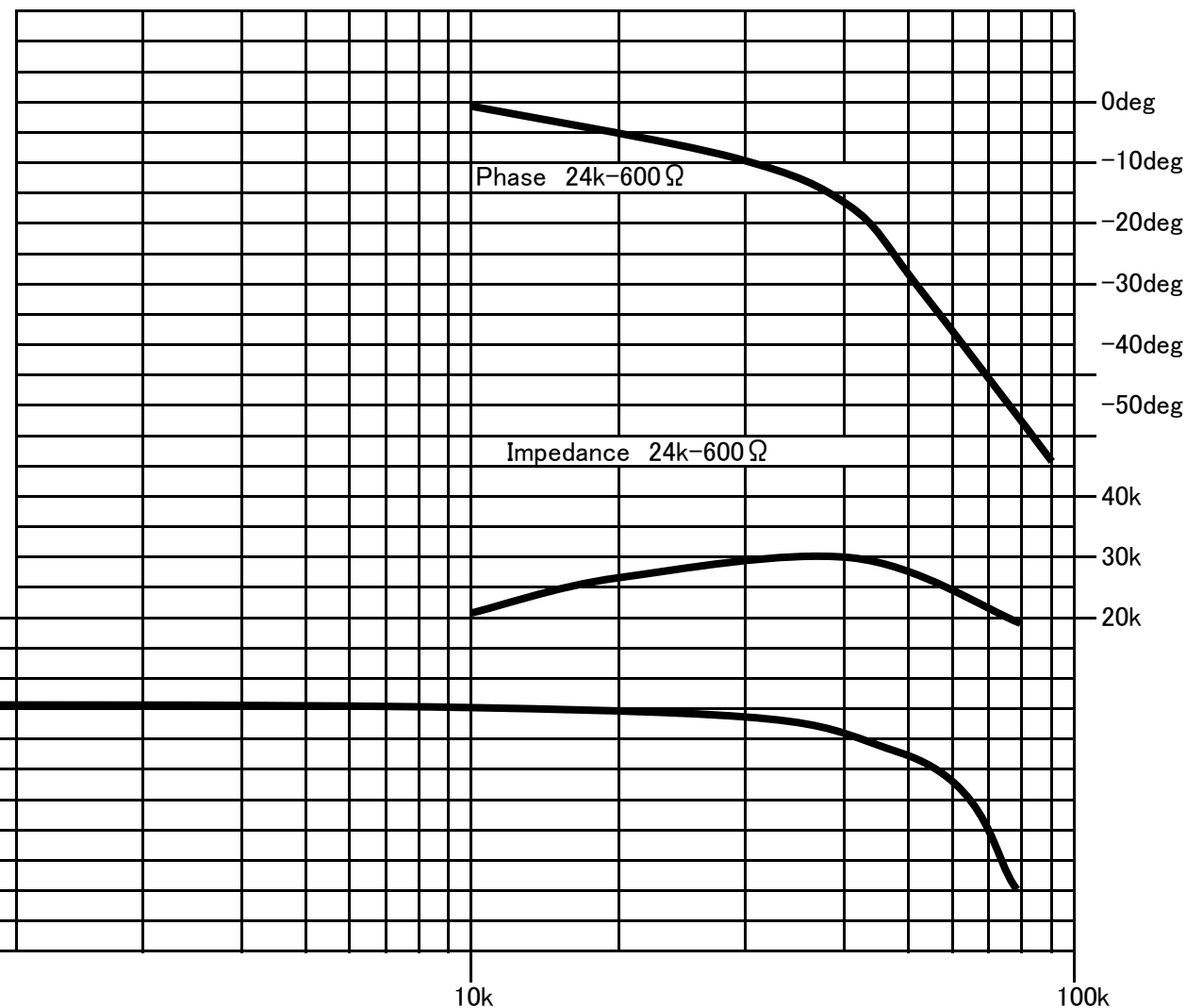
Audio Feast

This transformer is designed to be both input or output transformer.

### Wiring Connection

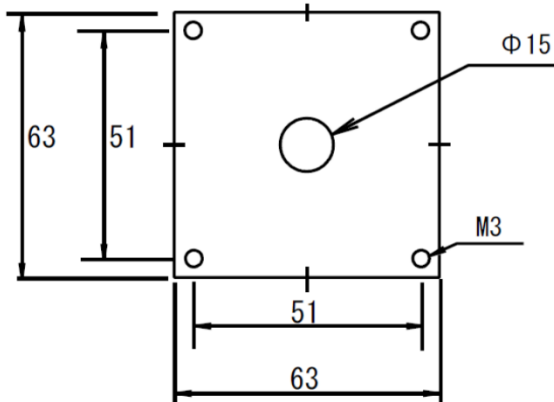
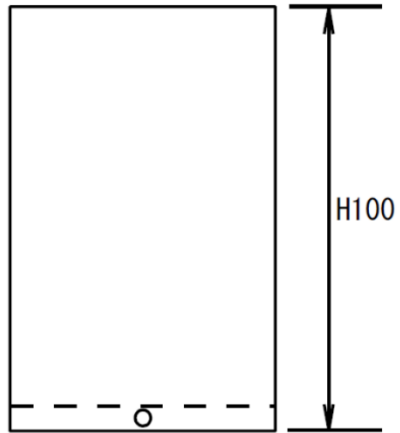


Ratio 1:0.159  
 Freq. Response 5~80kHz (-3dB Input 0.75V 24kΩ) Max Output Voltage 20V (15Hz)  
 Pri. Inductance 150H (40Hz)  
 Pri. DCR Brown-Red (307Ω) / Orange-Yellow (307Ω) Sec. DCR Blue-Gray (10.5Ω) / White-Black (10.5Ω)  
 Pri. max DC Current DC18mA (SET 24kΩ) DC36mA (SET 6kΩ) DC160mA (PP 24kΩ 2 tubes)  
 Sec. Load Resistance/Recommended 24kΩ (600Ω) 6kΩ (150Ω) It can be used sec. open.  
 Dimension 63x63x100 (H)mm Black hammered metal case, or Urushi finish



Email: [CleanUnderwear@gmail.com](mailto:CleanUnderwear@gmail.com)  
 Web: [TheAudioFeast.com](http://TheAudioFeast.com)  
 Distributed by Audio Feast (Nashville, TN, USA)  
 Final finish by Teramoto (Myoko, Japan)  
 Designed by General Ind. (Saitama, Japan)

Available on Black metal case OR  
Urushi finish



Black Metal Case



Urushi finish

All dimension is in mm.

Dimension does not include screws around the case.

