

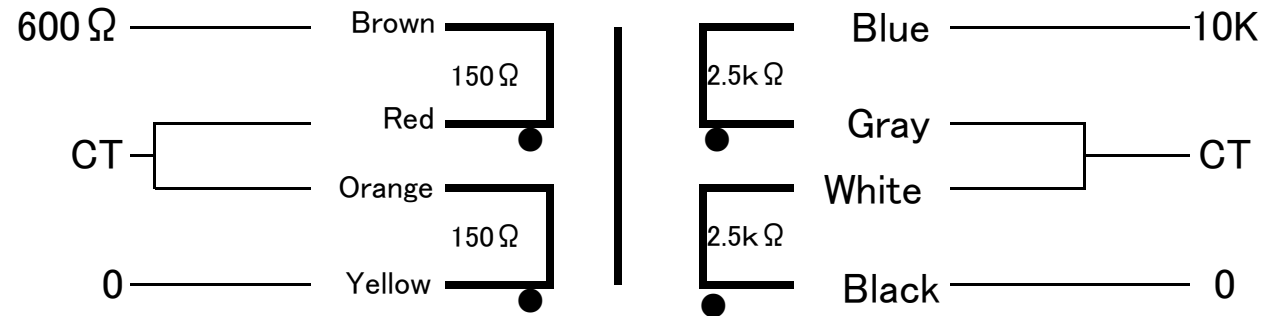


FM-600-10KCT

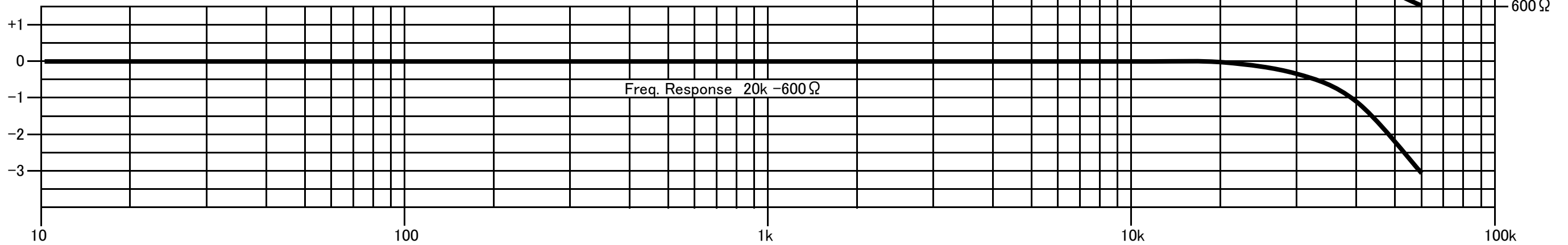
FINEMET® NANOCRYSTALLINE Core Input Transformer

Audio Feast

Wiring Connection

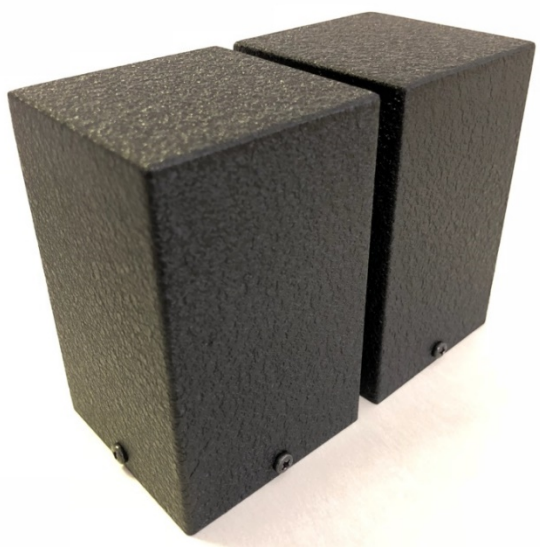
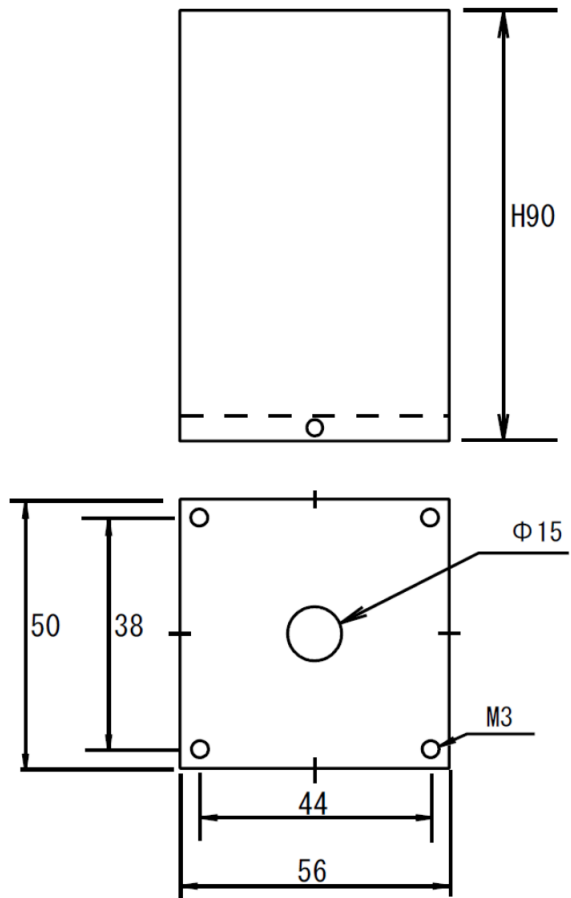


Ratio 1:4 Max input voltage 26V (20Hz)
Freq. Response 3~40kHz (-1dB 0.775V 0dB)
Pri. Inductance 60H (40Hz) Sec. DCR 10k~3.3MΩ
Pri. DCR Brown-Red (14.5Ω)/Orange-Yellow (14.5Ω) Sec. DCR Blue-Gray (260Ω)/White-Black (260Ω)
Pri. max DC Current 250mA Sec. max current 55mA
Dimension 50x55x90(H)mm Black hammered metal case, or Urushi finish
Mounting Screw 38x44mm



Email: CleanUnderwear@gmail.com
Web: TheAudioFeast.com
Distributed by Audio Feast (Nashville, TN, USA)
Final finish by Teramoto (Myoko, Japan)
Designed by General Ind. (Saitama, Japan)

Available on Black metal case OR
Urushi finish



Black Metal Case



Urushi finish

All dimension is in mm.

Dimension does not include screws around the case.

