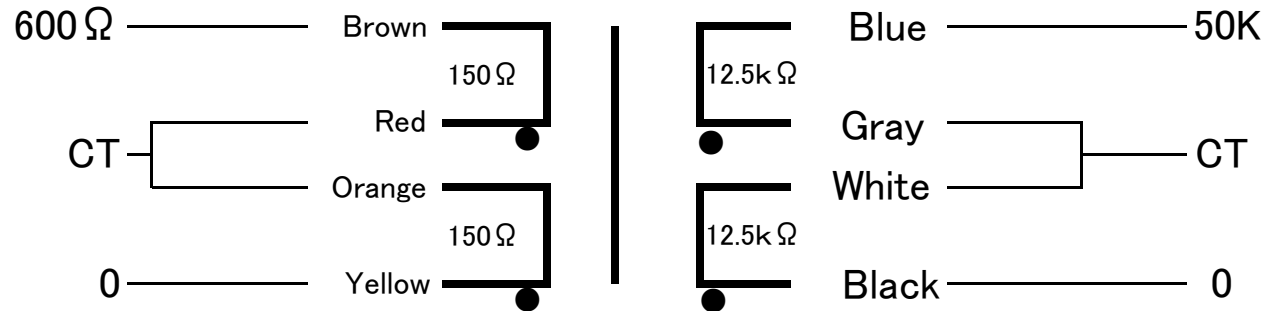




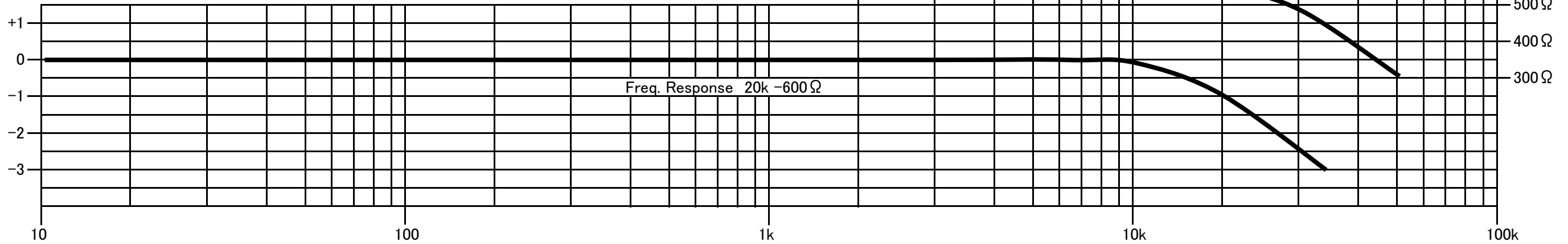
FM-600-50KCT  
FINEMET® NANOCRYSTALLINE Core Input Transformer

Audio Feast

### Wiring Connection

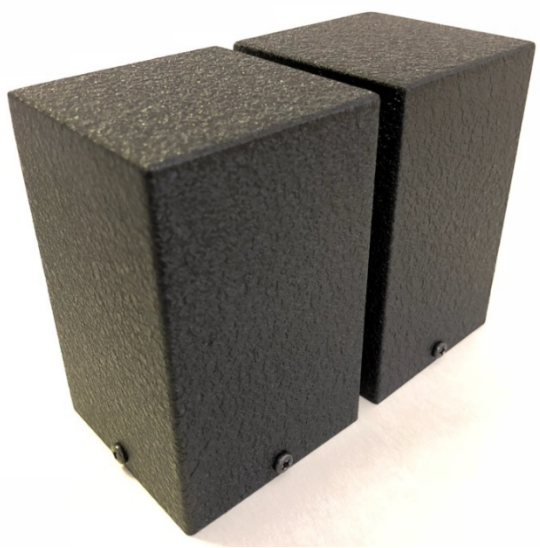
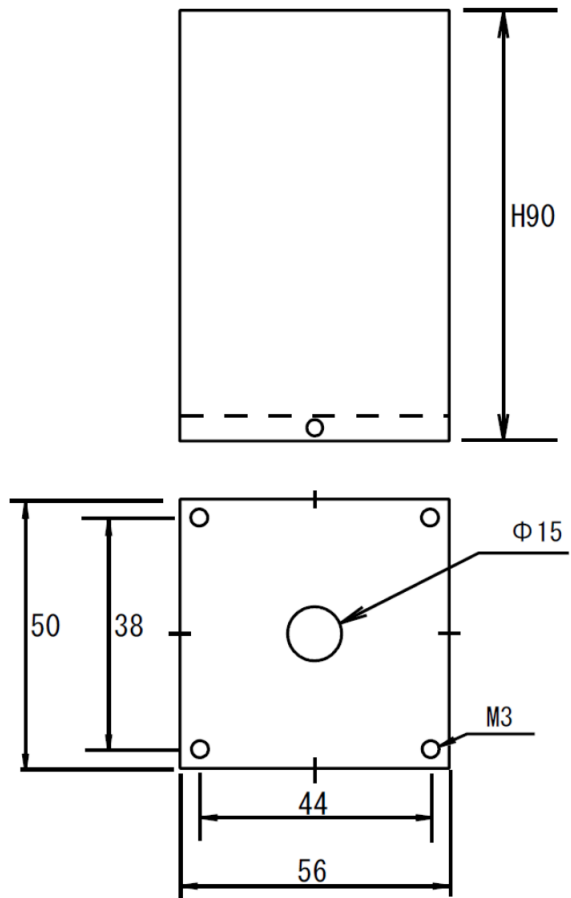


Ratio 1:9.2 Max Input Voltage 10V(20Hz)  
 Freq. Response 20~20kHz(-1dB 0.775V 0dB)  
 Pri. Inductance 15H(40Hz) Sec. Recommended Load resistance 50k-5MΩ  
 Pri. DCR Brown-Red(9.7Ω)/Orange-Yrllow(9.7Ω) Sec. DCR Blue-Gray(586Ω)/White-Black(586Ω)  
 Pri. max DC Current 140mA Sec. max Current 15mA  
 Dimension 50x55x90(H)mm Mounting Screw 38x44mm Black hammered metal case, or Urushi finish



Email: [CleanUnderwear@gmail.com](mailto:CleanUnderwear@gmail.com)  
 Web: [TheAudioFeast.com](http://TheAudioFeast.com)  
 Distributed by Audio Feast (Nashville, TN, USA)  
 Final finish by Teramoto (Myoko, Japan)  
 Designed by General Ind. (Saitama, Japan)

Available on Black metal case OR  
Urushi finish



Black Metal Case



Urushi finish

All dimension is in mm.  
Dimension does not include screws around the case.

